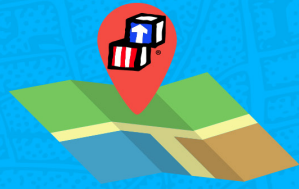


REGION VII HEAD START UPCOMING TRAINING



MAP TRAINING

MANAGEMENT ACCELERATION PROGRAM

*An Extensive, Multi-tiered Training for
New Head Start / Early Head Start Leadership*

The Region VII Management Acceleration Program (MAP) is an expansive training program that provides Head Start/Early Head Start Directors & Managers a solid foundation of Head Start principles and management practices. Participants begin a professional development journey that takes them through a continuum of learning of key Head Start areas.

Designed specifically for Head Start staff new to their current position two years or less, the Management Acceleration Program is the Region 7 road map to a better understanding and navigation of the Head Start Program.

MAP 2025 Kickoff:

May 1st 9 am to 11:30 am (Virtual Session)

Focus: Intro to MAP, History and Structure of Head Start

Invited Guest: Clarence Small, Region 7 Director, Office of Head Start

Facilitators: Region 7 Training & Technical Assistance Team, Regional & State Head Start Associations, Head Start Collaboration Offices

MAP 2025 Conference Pre-Track:

June 9th 10 am- 4:30 pm (In Person Session)

Focus: Systems, Leadership, Governance, Management Systems Wheel, Coordinated Approaches and Annual Program Planning

Facilitators: Jenny Burrows, Region VII TTA Grantee Specialist Manager, ICF; Brenda Spurgeon, Region VII TTA Early Childhood Manager, ICF; and Beth Nichols, Region VII Systems Specialist, ICF

2025 Additional Sessions

(Time and dates to be determined)

- **Eligibility, Recruitment, Selection, Enrollment, Attendance (ERSEA)**
- **Health**
- **Mental Health**
- **Education**
- **Parent, Family, Community, Engagement (PFCE)**



MAP CLASS OF 2025 REGISTRATION IS NOW OPEN!

\$1,385 fee includes six virtual sessions & one face-to-face session. Participants who complete all seven sessions receive R7HSA MAP certification. Participants attending individual sessions will receive certificates of participation for those sessions.

Programs may substitute staff for each session of MAP 2025 without additional cost.

Register at

<https://tinyurl.com/29fuumu6>

Please note: MAP participants are automatically registered for the Monday, June 9th MAP Pre-Track Session. The cost of this session, held in conjunction with the 2025 R7HSA Annual Conference, is included in MAP registration. The June 9th Session will be held from 10 am – 4:30 pm at the Sheraton Hotel at the Overland Park Convention Center. Lunch and snacks will be provided.

The Sheraton room block is now open. Reserve your rooms now as the block is expected to sell out quickly!

Book your room at

<https://tinyurl.com/ye29uryy>



Region VII Head Start Association

IOWA | KANSAS | MISSOURI | NEBRASKA

CELEBRATING 60 YEARS OF HEAD START

1965 – 2025